

Trait Comparison Plot Results
2025 Growing Season



**SEEDSMEN SELECT SERIES
COMMERCIAL TRIAL**

SILVER FARMS PLOT



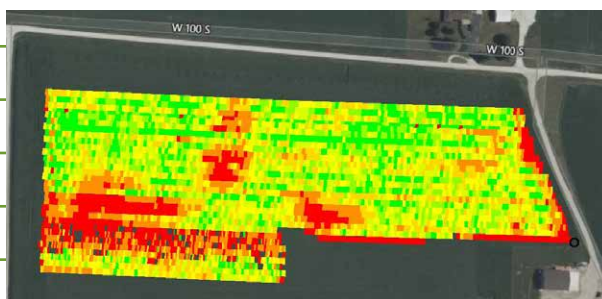
HYBRID	YIELD	MOISTURE	
EX-460-6 VT2P	231.8	20.4	North
SS-438-5 TRE	250.3	19.4	
SS-456-5 VT2P	229.7	20.6	
EX-455-6 VT2P	235.3	20.7	
EX-447-5 TRE	224.9	19.1	
EX-446-6 PCE	227.5	19.1	
SS-440-6 TRE	231.7	20	
SS-442-4 TRE	239	19	
SS-434-3 STAX	225.7	18.1	
SS-429-5 PCE	238.5	17.2	
SS-427-4 TRE	216.5	18.2	
EX-418-6 VT4	235.8	18.5	
EX-414-6 SSPRO	214.2	18.2	
SS-411-5 TRE	204.7	17.5	
EX-400-6 PCE	205.5	18.1	
SS-396-4 VT2P	217.4	17.5	
SS-384-5 TRE	209.3	17.6	South

Advantage with TuneUp+

SS-456-5 VT2P with TuneUp+	232.1	20.1	2.4 more bpa
SS-442-4 TRE with TuneUp+	246.8	19.1	7.8 more bpa

Hetrick, IN

Planted 4-28-25, Harvested 10-15-25
30" rows, 8 rows per entry
35,500 PPA planted
minimum .73 acres/entry
Fungicide areal applied at brown silk



*More early
water damage
on South end
of plot.*



World class genetics. Local roots.

CORN HYBRIDS/SOYBEAN/WHEAT

10280 West SR 28
West Lebanon, IN 47991
Matt Willard: 217-649-6348

SEEDSMANSHIP BY SEEDSMEN SINCE 1935

Contact your Martin Seed dealer or refer to the Bayer Technology Use Guide for recommended weed control programs. VT Double PRO®, SmartStax® RIB Complete®, Corn Blend, Trecepta®, Roundup Ready 2 Technology, PowerCore® and Roundup Ready® are trademarks of Bayer Group. POWERCORE® multi-event technology developed by Corteva Agriscience LLC and Monsanto. LibertyLink® and the Water Droplet Design are registered trademarks of BASF.

© 2025 Martin Seed. All rights reserved.

Plot Average 227.2 18.9

PCE



Seeds containing the PowerCore® Enlist®, PowerCore® Enlist® Refuge Advanced®, Enlist® Corn - REFUGE and Enlist E3® traits are protected under one or more U.S. patents which can be found at www.traitsstewardship.com. The purchase of this traited seed includes a limited license to produce a single crop in the United States. The use of seed from such a crop and/or the progeny thereof for propagation or seed multiplication or for production or development of a hybrid or different variety of seed is strictly prohibited. You acknowledge and agree to be bound by the terms and conditions of the following documents in effect at the time of planting of this seed: (i) the Corteva Agriscience Technology Use Agreement and (ii) the Product Use Guides for all technologies in this seed, including the Herbicide Resistance Management (HRM), and Use requirements.

To plant PowerCore Enlist, PowerCore Enlist Refuge Advanced, Enlist Corn - REFUGE and Enlist E3 seed, you must have a limited license from Corteva Agriscience (or other appropriate affiliates). In consideration of the foregoing, Corteva Agriscience grants to the Grower a limited license to use its technology to produce only a single commercial crop in the United States under the terms and conditions set forth in the Technology Use Agreement in effect at the time of planting of this seed.

IRM - Properly managing trait technology is key to preserving it as a long term crop protection tool. **Growers who fail to comply with IRM requirements risk losing access to this product.** To help preserve the effectiveness of B.t. corn technologies, growers planting B.t. corn technologies are required to follow an IRM Plan. Consult the Corn Product Use Guide for appropriate refuge configuration options. Before opening a bag of seed, be sure to read, understand and accept the stewardship requirements, including applicable refuge requirements for insect resistance management, for the biotechnology traits expressed in the seed as set forth in the Technology Use Agreement and Product Use Guide. By opening and using a bag of seed, you are reaffirming your obligation to comply with the most recent stewardship requirements. For complete details on IRM requirements for hybrids with Bt technology, including refuge examples and important information on the use of insecticides on refuge and Bt corn acres, please consult appropriate Product Use Guide. Go to www.corteva.us/Resources/trait-stewardship.html to download the latest Corteva Agriscience Corn Product Use Guide.

Corteva Agriscience is a member of Excellence Through Stewardship® (ETS). Corteva Agriscience product are commercialized in accordance with ETS Product Launch Stewardship Guidance and in compliance with the Corteva Agriscience policies regarding stewardship of those products. In line with these guidelines, our product launch process for responsible launches of new products includes a longstanding process to evaluate export market information, value chain consultations, and regulatory functionality. Growers and end-users must take all steps within their control to follow appropriate stewardship requirements and confirm their buyer's acceptance of the grain or other material being purchased. For more detailed information on the status of a trait or stack, please visit www.biotradestatus.com. Excellence Through Stewardship® is a registered trademark of Global Stewardship Group.

Following burndown, Enlist Duo® and Enlist One® herbicides with Colex-D® technology are the only herbicides containing 2,4-D that are authorized for preemergence and postemergence use with Enlist® crops. Consult Enlist® herbicide labels for weed species controlled. Enlist Duo and Enlist One herbicides are not registered for use or sale in all states and counties; are not registered in AK, CA, CT, HI, ID, MA, ME, MT, NH, NV, OR, RI, UT, VT, WA and WY; and have additional subcounty restrictions in AL, GA, TN and TX, while existing county restrictions still remain in FL. All users must check "Bulletins Live! Two" no earlier than six months before using Enlist One or Enlist Duo. To obtain "Bulletins," consult epa.gov/espp/, call 1-844-447-3813, or email ESPP@epa.gov. You must use the "Bulletin" valid for the month and state and county in which Enlist One or Enlist Duo are being applied. Contact your state pesticide regulatory agency if you have questions about the registration status of Enlist® herbicides in your area. **ALWAYS READ AND FOLLOW PESTICIDE LABEL DIRECTIONS. IT IS A VIOLATION OF FEDERAL AND STATE LAW TO USE ANY PESTICIDE PRODUCT OTHER THAN IN ACCORDANCE WITH ITS LABELING. ONLY USE FORMULATIONS THAT ARE SPECIFICALLY LABELED FOR SUCH USE IN THE STATE OF APPLICATION. USE OF PESTICIDE PRODUCTS, INCLUDING, WITHOUT LIMITATION, 2,4-D-CONTAINING PRODUCTS NOT AUTHORIZED FOR USE WITH ENLIST CORN AND SOYBEANS, MAY RESULT IN OFF-TARGET DAMAGE TO SENSITIVE CROPS/AREAS AND/OR SUSCEPTIBLE PLANTS, IN ADDITION TO CIVIL AND/OR CRIMINAL PENALTIES.** Additional product-specific stewardship requirements for Enlist crops, including the Enlist Product Use Guide, can be found at www.traitsstewardship.com. POWERCORE® multi-event technology developed by Corteva Agriscience LLC and Monsanto. LibertyLink® and the Water Droplet Design are registered trademarks of BASF. PowerCore® and Roundup Ready® are registered trademarks of Bayer Group. Always follow IRM, grain marketing and all other stewardship practices and pesticide label directions. B.t. products may not yet be registered in all states. Check with your seed representative for the registration status in your state.™ ® Trademarks of Corteva Agriscience and its affiliated companies.



Before opening a bag of seed, be sure to read, understand and accept the stewardship requirements, including applicable refuge requirements for insect resistance management, for the biotechnology traits expressed in the seed as set forth in the Technology/Stewardship Agreement that you sign. By opening and using a bag of seed, you are reaffirming your obligation and agreement to comply with the most recent stewardship requirements.

SSPRO



Bayer is a member of Excellence Through Stewardship® (ETS). Bayer products are commercialized in accordance with ETS Product Launch Stewardship Guidance, and in compliance with Bayer's Policy for Commercialization of Biotechnology-Derived Plant Products in Commodity Crops. Commercialized products have been approved for import into key export markets with functioning regulatory systems. Any crop or material produced from this product can only be exported to, or used, processed or sold in countries where all applicable regulatory approvals have been granted. It is a violation of national and international law to move material containing biotech traits across boundaries into nations where import is not permitted. Growers should talk to their grain handler or product purchaser to confirm their buying position for this product. Excellence Through Stewardship® is a registered trademark of Excellence Through Stewardship.

ALWAYS READ AND FOLLOW PESTICIDE LABEL DIRECTIONS.

B.t. products may not yet be registered in all states. Check with your seed brand representative for the registration status in your state.

IMPORTANT IRM INFORMATION: Certain products are sold as RIB Complete® corn blend products, and do not require the planting of a structured refuge except in the Cotton-Growing Area where corn earworm is a significant pest. Products sold without refuge in the bag (non-RIB Complete) require the planting of a structured refuge. **See the IRM/Grower Guide for additional information. Always read and follow IRM requirements.**

Roundup Ready® 2 Technology contains genes that confer tolerance to glyphosate. Plants that are not tolerant to glyphosate may be damaged or killed if exposed to those herbicides. RIB Complete®, Roundup Ready 2 Technology and Design®, Roundup Ready® and SmartStax® are registered trademarks of Bayer Group. Herculex® is a registered trademark of Dow AgroSciences LLC. Respect the Refuge and Corn Design® is a registered trademark of National Corn Growers Association.

VT2P



Bayer is a member of Excellence Through Stewardship® (ETS). Bayer products are commercialized in accordance with ETS Product Launch Stewardship Guidance, and in compliance with Bayer's Policy for Commercialization of Biotechnology-Derived Plant Products in Commodity Crops. Commercialized products have been approved for import into key export markets with functioning regulatory systems. Any crop or material produced from this product can only be exported to, or used, processed or sold in countries where all applicable regulatory approvals have been granted. It is a violation of national and international law to move material containing biotech traits across boundaries into nations where import is not permitted. Growers should talk to their grain handler or product purchaser to confirm their buying position for this product. Excellence Through Stewardship® is a registered trademark of Excellence Through Stewardship.

ALWAYS READ AND FOLLOW PESTICIDE LABEL DIRECTIONS.

B.t. products may not yet be registered in all states. Check with your seed brand representative for the registration status in your state.

IMPORTANT IRM INFORMATION: Certain products are sold as RIB Complete® corn blend products, and do not require the planting of a structured refuge except in the Cotton-Growing Area where corn earworm is a significant pest. Products sold without refuge in the bag (non-RIB Complete) require the planting of a structured refuge. **See the IRM/Grower Guide for additional information. Always read and follow IRM requirements.**

Roundup Ready® 2 Technology contains genes that confer tolerance to glyphosate. Plants that are not tolerant to glyphosate may be damaged or killed if exposed to those herbicides. RIB Complete®, Roundup Ready 2 Technology and Design®, Roundup Ready® and VT Double PRO® are registered trademarks of Bayer Group. Respect the Refuge and Corn Design® is a registered trademark of National Corn Growers Association.

TRE



Bayer is a member of Excellence Through Stewardship® (ETS). Bayer products are commercialized in accordance with ETS Product Launch Stewardship Guidance, and in compliance with Bayer's Policy for Commercialization of Biotechnology-Derived Plant Products in Commodity Crops. Commercialized products have been approved for import into key export markets with functioning regulatory systems. Any crop or material produced from this product can only be exported to, or used, processed or sold in countries where all applicable regulatory approvals have been granted. It is a violation of national and international law to move material containing biotech traits across boundaries into nations where import is not permitted. Growers should talk to their grain handler or product purchaser to confirm their buying position for this product. Excellence Through Stewardship® is a registered trademark of Excellence Through Stewardship.

ALWAYS READ AND FOLLOW PESTICIDE LABEL DIRECTIONS.

B.t. products may not yet be registered in all states. Check with your seed brand representative for the registration status in your state.

IMPORTANT IRM INFORMATION: Certain products are sold as RIB Complete® corn blend products, and do not require the planting of a structured refuge except in the Cotton-Growing Area where corn earworm is a significant pest. Products sold without refuge in the bag (non-RIB Complete) require the planting of a structured refuge. **See the IRM/Grower Guide for additional information. Always read and follow IRM requirements.**

Roundup Ready® 2 Technology contains genes that confer tolerance to glyphosate. Plants that are not tolerant to glyphosate may be damaged or killed if exposed to those herbicides. Insect control technology provided by Vip3A is utilized under license from Syngenta Crop Protection AG. RIB Complete®, Roundup Ready® and Trecepta® are registered trademarks of Bayer Group. Agrisure Viptera® is a registered trademark of a Syngenta group company. Respect the Refuge and Corn Design® is a registered trademark of National Corn Growers Association.



Before opening a bag of seed, be sure to read, understand and accept the stewardship requirements, including applicable refuge requirements for insect resistance management, for the biotechnology traits expressed in the seed as set forth in the Technology/Stewardship Agreement that you sign. By opening and using a bag of seed, you are reaffirming your obligation and agreement to comply with the most recent stewardship requirements.

